



Apollo Basic Roller Shades

Forest Apollo - Direct Mount and Cassette Mount roller shades can be wall or ceiling mounted in a commercial or residential setting. Apollo uses a bidirectional clutch with a tube diameter of 1 1/2" (38 mm). The maximum weight is 8 lbs, 13 oz (4 kg).

ASSEMBLED SYSTEM includes one of our ten stock fabrics, 1 1/2" / 38 mm tube, roller mechanism, direct mount brackets, bracket cover, bottom rail with end cap and child safety device. Order side channels separately.

Apollo Single Direct Mount Assembled Pricing



Apollo Double Direct Mount Assembled Pricing



Apollo Cassette Mount Assembled Pricing



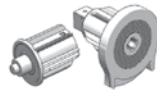
Apollo Roller Shade Components – All Mounting Styles



71119-90
1 1/2" / 38mm
19' Tube, aluminum



72311-25
Hold Down Strip
with adhesive
2,000 ft/roll



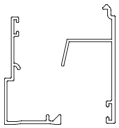
72309HD-25
Heavy Duty Clutch
w/ end plug
1 set/box



72306-25
Multi-Purpose Bracket
steel, 2 pcs
1 set/box



810119-25
One Piece Inside Mount
Side Guide Profile, 19'



2 Piece Outside Mount
Side Channel
71619-25 Bottom
71719-25 Top



Endless Chain
Nickel
49020-90, 29"
49024-90, 69"



49501-25
Tension Device
For child safety
250/box



79005-00
Clear Ball Stopper
500/box



810219-25
Chain Safety Device
1/box



79002-25
Brush
for Bottom Rail



810219-25
Bottom Profile



73109-25
PVC Tape

Apollo Roller Shade Bracket Components – Direct Mount

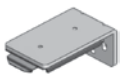


72304-25
Bracket Cover
1 set/box



72305-25
Double Bracket
steel, 2 pcs
1 set/box

Apollo Roller Shade Bracket and Cassette Components – Cassette Mount



72307-90
Wall Bracket
steel



72308-90
Ceiling Bracket
steel



71312-25
Cassette Headrail, 11'9"



72314-25
Cassette Bracket Covers
plastic
1 set/box



71412-25
Cassette Valance, 11'9"
aluminum, white

FOREST[®]
Apollo

FOREST[®]
Mercury

FOREST[®]
Atlantis

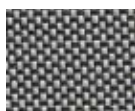
Fabric Options for all Forest Roller Shades

In Stock Fabrics

These fabrics are in stock at Forest for the best value and shortest production time.



74002-99
3% Openness
Bone White
width = 118 in.
length = 27 yds.



74003-55
3% Openness
Charcoal
width = 98 in.
length = 32 yds.



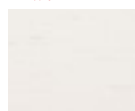
74004-97
3% Openness
Vanilla Creme
width = 98 in.
length = 30 yds.

NEW!



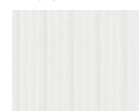
74010-52
3% Openness
Grey Cloud
width = 118 in.
length = 30 yds.

NEW!



74007-25
Sheer
White Linen
width = 94 in.
length = 32 yds.

NEW!

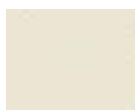


74008-25
Sheer
Broad Lines
width = 94 in.
length = 54 yds.

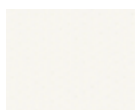
NEW!



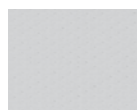
74009-25
Sheer
Fine Lines
width = 94 in.
length = 54 yds.



74001-98
Blackout Fabric
Ecu
width = 100 in.
length = 32 yds.



74005-01
Blackout Fabric
Frost
width = 118 in.
length = 30 yds.



74006-08
Blackout Fabric
Pewter
width = 118 in.
length = 30 yds.



NEW CARD COMING SOON!

Ask sales for
a swatch card!

Available to Order Fabrics

Choose from among hundreds of fabrics in many types, colors and patterns. Contact sales for a binder, pricing and lead times.



The Forest designer fabric swatch binder contains more than 100 roller shade fabrics available to order. Approximate lead time is 2 weeks.



The Forest special order fabric swatch binder contains more than 100 roller shade fabrics available to order. Approximate lead time is 6-8 weeks.

Climate Screen Insulating Material

Climate Screen by Forest offers a wide range of advanced daylight filter systems that are specially designed to minimize the entry of solar heat into a room. The unique features of the Climate Screen work bilaterally. In the summer the warmth will be kept out and in the winter the warmth will stay inside. Please see more information on the facing page.



Climate Screen Insulating Roller Shade Material

Climate Screen roller shade material offers a wide range of advanced daylight filter systems that are specially designed to minimize the entry of solar heat into a room. The unique features of the material work bilaterally. In the summer the warmth will be kept out and in the winter the warmth will stay inside.

Climate Screen – Benefits

- Completely clear view to the outside
- Energy efficient for sustainable buildings
- Controls glare on computer screens
- Reduces energy costs
- Optimum heat resistant effect
- Excellent insulating features
- Positive contribution to Building Energy Performance Standards
- Durable and easy to clean
- Sleek and contemporary look

Climate Screen – Properties of Insulation



STANDARD SHADE FABRIC
75% of heat is transmitted
25% of heat is reflected



CLIMATE SCREEN MATERIAL
20.3% of heat is transmitted
79.7% of heat is reflected



CLIMATE SCREEN MATERIAL
100% of heat is retained